



UPGRADE PROCEDURE

# Infinity 3100 Remotes

12 April 2013

**CHANGE HISTORY:**

<b>DATE</b>	<b>VERS.</b>	<b>REV.</b>	<b>CHANGE</b>
12/04/13	1	4	First Issue – Not Applicable

NOTE: Information contained here in is subject to change without notice. The specifications and information regarding the products in this document are subject to change without notice. All statements, information, and recommendations in this document are believed to be accurate, but are presented without warranty of any kind, express, or implied. Users must take full responsibility for their application of any products. Trademarks, brand names and products mentioned in this document are the property of their respective owners. All such references are used strictly in an editorial fashion with no intent to convey any affiliation with the name or the product's rightful owner.

**Table of contents:**

1 **PURPOSE**.....4

2 **INTENDED AUDIENCE** .....4

3 **CONTENTS OF THIS GUIDE**.....4

4 **GETTING HELP** .....4

5 **DOWNLOADING PACKAGES TO THE SATELLITE ROUTER** .....5

6 **DOWNLOADING THE OPTIONS FILE TO THE SATELLITE ROUTER** .....12

---

## 1 PURPOSE

This document provides detailed instructions for installing and commissioning iDirect 3100 Satellite Routers at remote sites.

---

## 2 INTENDED AUDIENCE

This guide is written for iDirect installers and for other satellite technicians tasked with the installation and commissioning of iDirect infinity or Evolution Satellite Routers.

---

## 3 CONTENTS OF THIS GUIDE

This document contains the following major sections:

- Downloading Packages to the Satellite Router from [https://www.dropbox.com/s/5csy6kn8bb9c105/Remote\\_iNFINITI.7z](https://www.dropbox.com/s/5csy6kn8bb9c105/Remote_iNFINITI.7z)
- Downloading the Options File to the Satellite Router (demand at MilanoTeleport)

---

## 4 GETTING HELP

The Network Operation Center (NOC) is available to help you during normal working hours, from Monday to Friday.

Software and other documentation products are available on the NOC webpage. Please access our NOC webpage at: <http://www.milanoteleport.com/idirect/>

If you are unable to find the answers or information that you need, you can contact the NOC at [+39 02 3626 5897](tel:+390236265897)  
[+39-02-36265897](tel:+390236265897).

## 5 DOWNLOADING PACKAGES TO THE SATELLITE ROUTER

Perform the steps in this section to download the image packages containing software and firmware for the current release from your laptop to the Satellite Router.

Prerequisite: iSite version iDx 10.0.1.0 must be installed on the laptop used for the upgrade. You may find the installation program at the NOC webpage.

1. Connect the LAN port of the laptop to the LAN B port of the Satellite Router using a crossover LAN cable. (Newer laptops adjust when you use a straight through cable, but older machines do not.)
2. Launch iSite. iSite automatically discovers the Satellite Router in the iSite Tree View, as shown in Figure 1.
3. Launch telnet, as shown in Figure 1.1

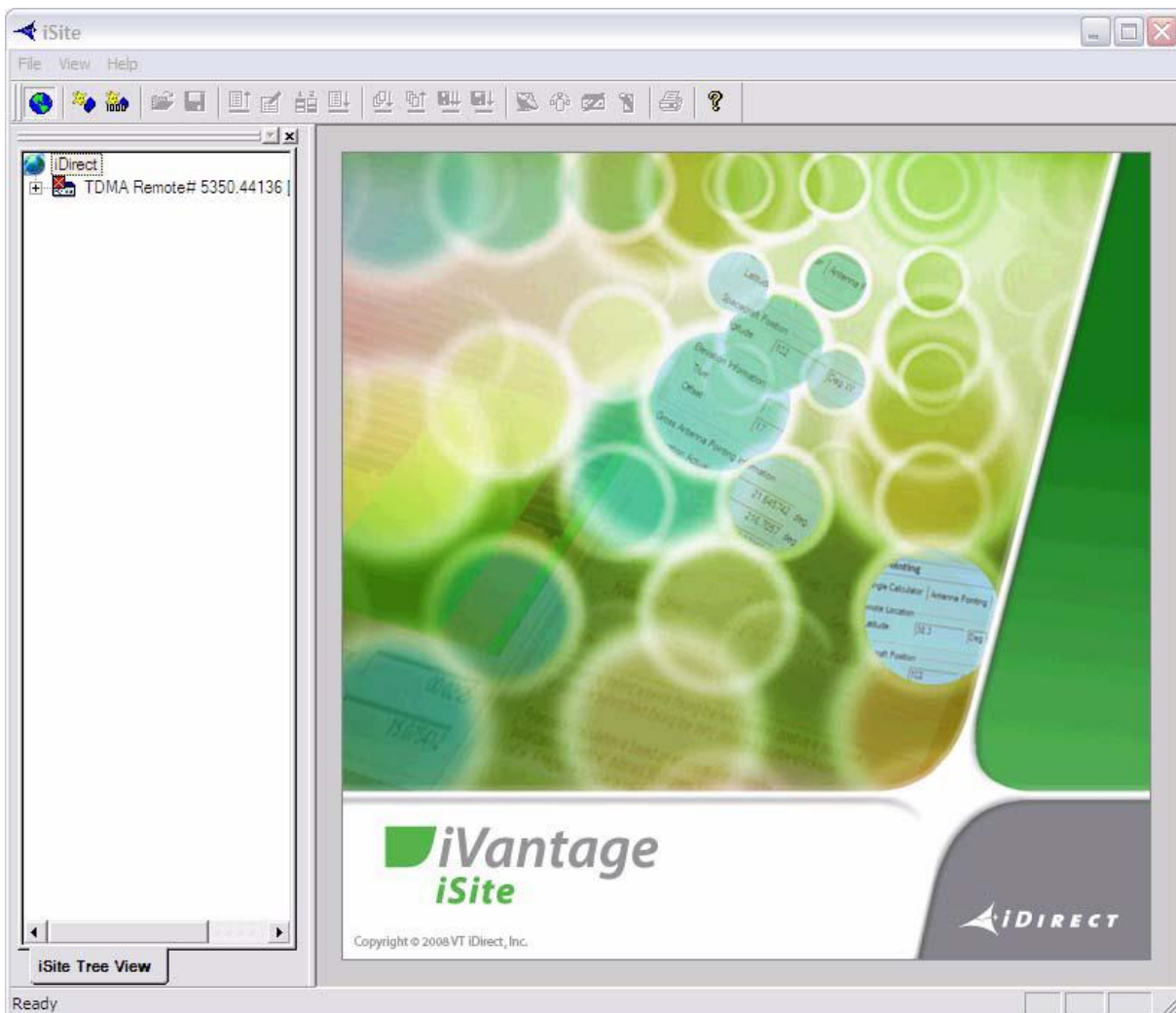


Figure 1: iSite Welcome Screen

© Copyright Milano Teleport S.p.A. 2013- All rights reserved

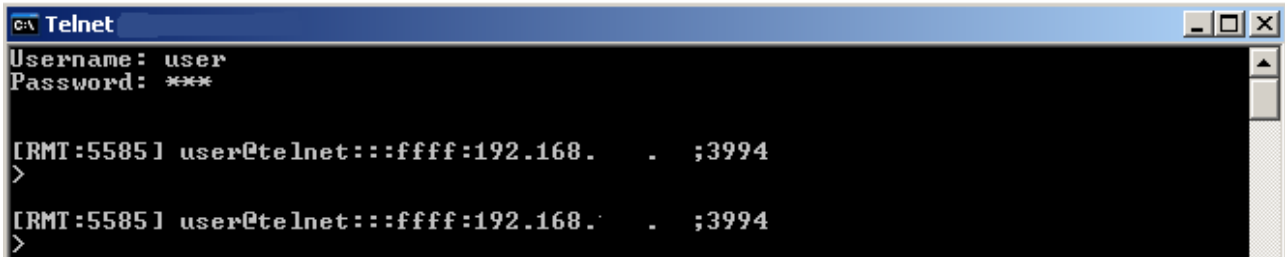
Author : NOC MT  
Code : 10.0.1.0  
Date : 12-Apr-13

iDx 10.0.1.0 Upgrade Procedure  
iDirect 3100 Modem

Version:1 Revision:3

pag. 5/14

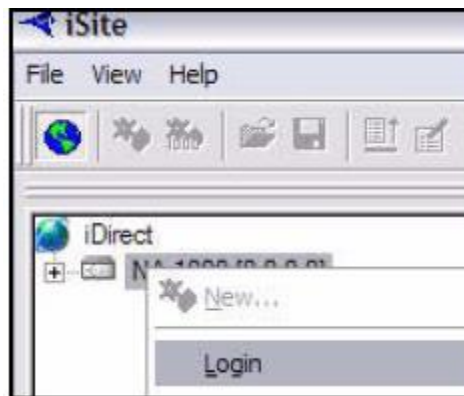
**Note:** If iSite does not automatically discover the Satellite Router, right-click the iDirect globe in the iSite tree and select New from the menu to add an unknown element to the tree. Then right-click the new element and log on using the IP address of the router. In case the IP address of the router is unknown, a local access to the modem via Hyperterminal is required. Please contact [noc@milanoteleport.com](mailto:noc@milanoteleport.com) for detailed procedure.



**Figure 2.1: Telnet Welcome Screen**

**Note:** Keep the telnet windows open during the configuration

- Right-click the Satellite Router in the iSite Tree View and select Login.



The Login dialog box opens, pre-configured with your Satellite Router's IP Address



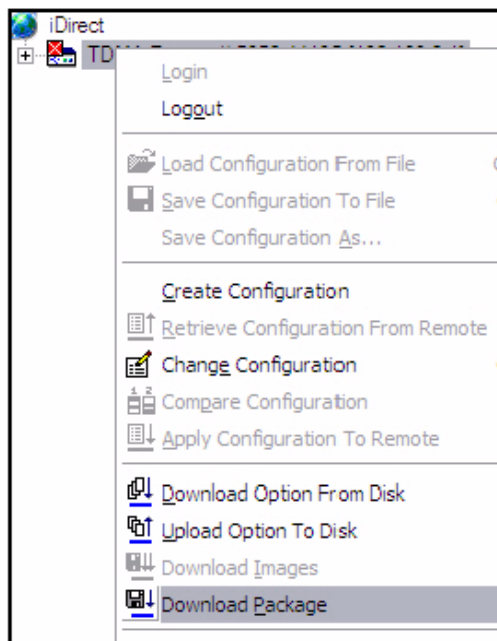
**Figure 3: iSite Login Dialog Box**

- Type the default Password, "iDirect" or contact MilanoTeleport

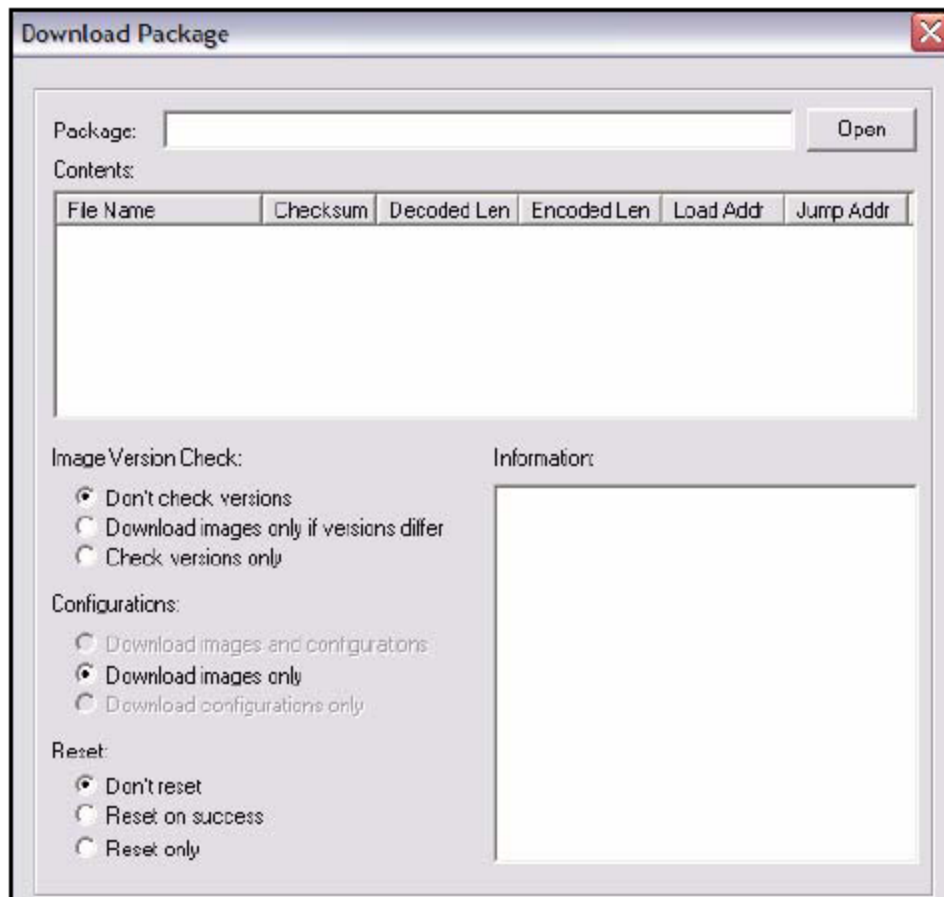
© Copyright Milano Teleport S.p.A. 2013- All rights reserved

Author : NOC MT	iDx 10.0.1.0 Upgrade Procedure	Version:1 Revision:3
Code : 10.0.1.0	iDirect 3100 Modem	
Date : 12-Apr-13		pag. 6/14

- 5.1 The user and the password is the same for Telnet: “Admin” and “iDirect” or different (contact MT)
6. . In the **Login as** section of the dialog box:
  - a. Select **Admin**.
  - b. Select or clear the **Secure Connection** check box, depending on the version of the iDirect application.  
 If a pre-7.1 version of the iDirect application is currently installed on the Satellite Router, clear the **Secure Connection** check box. If later images have already been installed, select **Secure Connection**.
7. Click **OK** to log on to the Satellite Router.
8. Right-click the Satellite Router in the iSite Tree View and select **Download Package**.

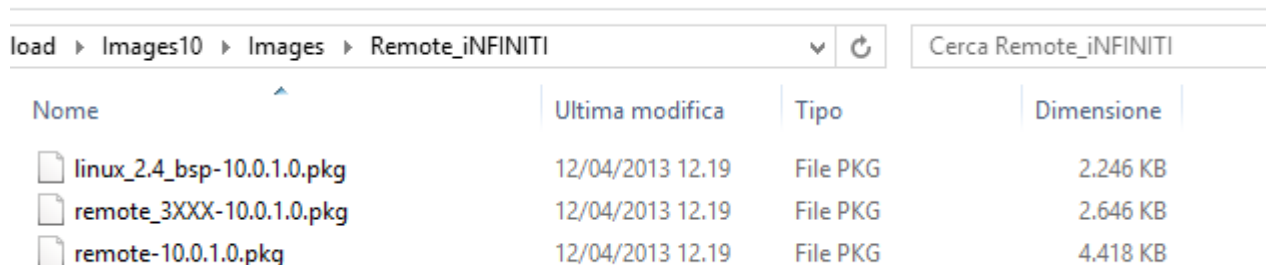


The **Download Package** dialog box opens.



**Figure 4: Download Package Dialog Box**




9. In the Download Package dialog box, click the Open button to display the Open dialog box.



**Figure 5: Open Dialog Box with Images Folder**

10. Navigate to the remote packages on your laptop. They are located in the Images folder for your release, as illustrated in Figure 5.
11. In the Open dialog box, double-click the images→Remote\_iNfinity folder to open it.



load ▶ Images10 ▶ Images ▶ Remote_iNFINITI			
Nome	Ultima modifica	Tipo	Dimensione
 linux_2.4_bsp-10.0.1.0.pkg	12/04/2013 12.19	File PKG	2.246 KB
 remote_3XXX-10.0.1.0.pkg	12/04/2013 12.19	File PKG	2.646 KB
 remote-10.0.1.0.pkg	12/04/2013 12.19	File PKG	4.418 KB

**Figure 6: Remote Packages for 3100 Satellite Router**

As shown in figure 9, the **Remote\_infinity** folder contains two package files for the Evolution X3 Satellite Router. The Evolution X3 packages/X5 packages have the following names, where X stands for any digit:

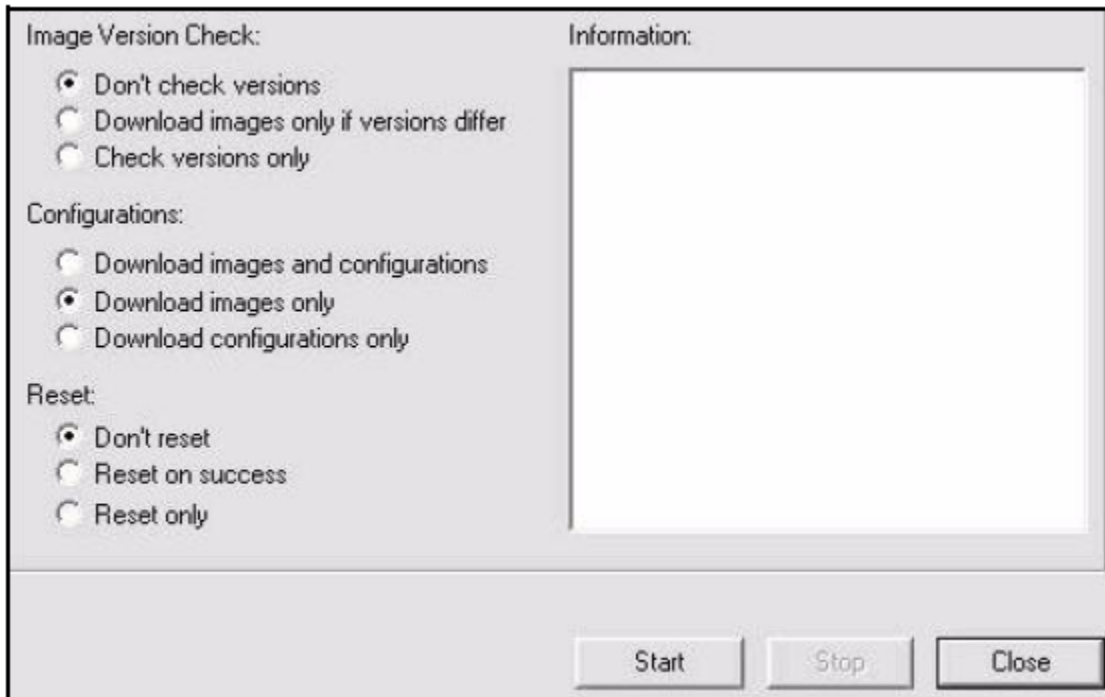
- linux\_2.4\_bsp-10.0.1.0
- remote\_3XXX-10.0.1.0

You must first download the linux\_2.4 (BSP) package, followed by the remote image package.

**Note: You must download both packages to your Satellite Router, beginning with the linux\_2.4 package.**

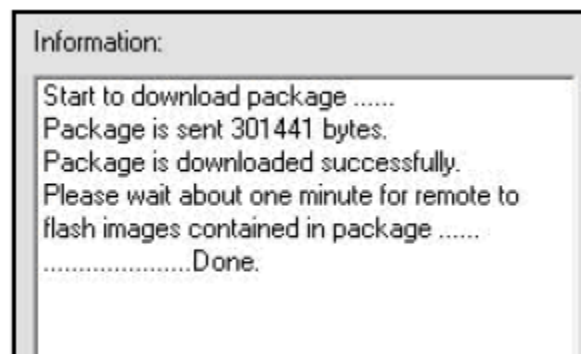
**Note: During this time, observe the output of both iSite and a console session to verify that the download is complete before going on to the next step. iSite may not be synchronized with the console.**

12. Double-click the linux\_2.4 package in the Open dialog box to return to the Download Package dialog box.



**Figure 7: Download Package Dialog Box with Correct Selections**

13. In the Download Package dialog box, select the following options as shown in Figure 7.
  - ✓ Don't check versions
  - ✓ Download images only
  - ✓ Don't reset
14. Click the Start button.
15. Wait while the download progresses. Observe the Information section of the Download, double check with telnet Figure 7.1
16. Package dialog box until the word Done is displayed



**Figure 8: Download Package Dialog Box: Information Section**

```

c:\ Prompt dei comandi
SavePackage: [71E2] readme.txt (216)...Saved.
SavePackage: [FC2B] linux_2.4_bsp.tar.bz2 (2276126)...Saved.
SavePackage: [19EE] package_install.sh (7643)...Saved.
SavePackage: [A3B3] get_board_family.sh (1054)...Saved.
SavePackage: [B9A0] package_summary.xml (873)...Saved.
SavePackage: [5C7C] startup_bsp_sigs_update.sig (9206)...Saved.
DownloadManager started install script
Stu0900Device::FE_StartSearch
SFR: Init = 0F2B UP = 8F3E LOW = 8F17
mlband 1367000000
cal vco[0x62]ni[0x32]nf[0x42]k[0x3d]lg[0x3c]lf[0xc2]dlb[0xdc]t1[0x8f]lfcck[0xd]lpen
[0xfblt3[0xde]
prg lock[0x81]lvc[0x62]ni[0x32]nf[0x42]k[0x3d]lg[0x3c]lf[0xc2]dlb[0xdc]t1[0x8f]lfc
k[0xd]lpen[0xfblt2[0xde]
Stu0900Device::FE_StartSearch
SFR: Init = 0F2B UP = 8F3E LOW = 8F17
Stu0900Device::FE_StartSearch
SFR: Init = 0F2B UP = 8F3E LOW = 8F17
Stu0900Device::FE_StartSearch
SFR: Init = 0F2B UP = 8F3E LOW = 8F17
Stu0900Device::FE_StartSearch
SFR: Init = 0F2B UP = 8F3E LOW = 8F17
Stu0900Device::FE_StartSearch
SFR: Init = 0F2B UP = 8F3E LOW = 8F17
Stu0900Device::FE_StartSearch
SFR: Init = 0F2B UP = 8F3E LOW = 8F17
PKG: Flash Completed
  
```

Figure 9.1: Download Package Dialog Box: Telnet Information Section

When the download of the linux\_2.4 has finished, you must perform similar steps to download the remote image package to the Satellite Router.

1. Click the Open button in the Download Package dialog box again (Figure 4) and navigate back to the remote packages on your laptop.




	linux_2.4_bsp-10.0.1.0.pkg	08/04/2013 14.37	File PKG	2.246 KB
	remote_3XXX-10.0.1.0.pkg	08/04/2013 14.37	File PKG	2.646 KB
	remote-10.0.1.0.pkg	08/04/2013 14.37	File PKG	4.418 KB

Figure 10: Remote Packages With Remote Image File Selected

Figure 10 shows the **Open** dialog box with the remote image file for the 3100 Satellite Router highlighted.

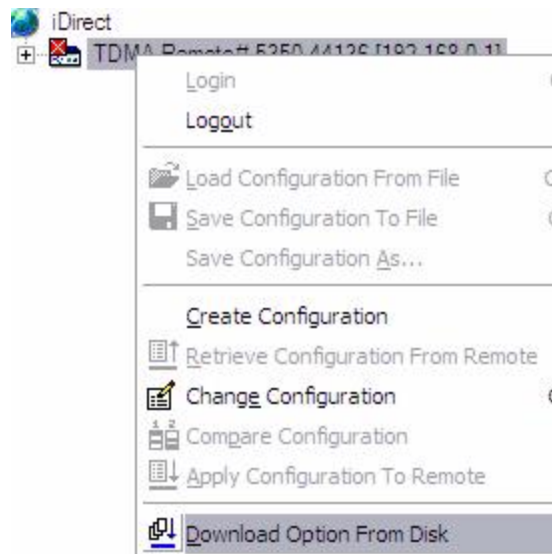
2. Double-click the remote image package in the Open dialog box to return to the Download Package dialog box.
3. In the Download Package dialog box, select the following options as shown in Figure 7
  - ✓ Don't check versions
  - ✓ Download images only
  - ✓ Don't reset
4. Click the Start button.
5. Wait while the download progresses. Observe the **Information** section of the **Download Package** dialog box until the word **Done** is displayed.

Once you have downloaded both the cumulative update and remote images, you have successfully downloaded the packages to your Satellite Router. Next, download the options file.

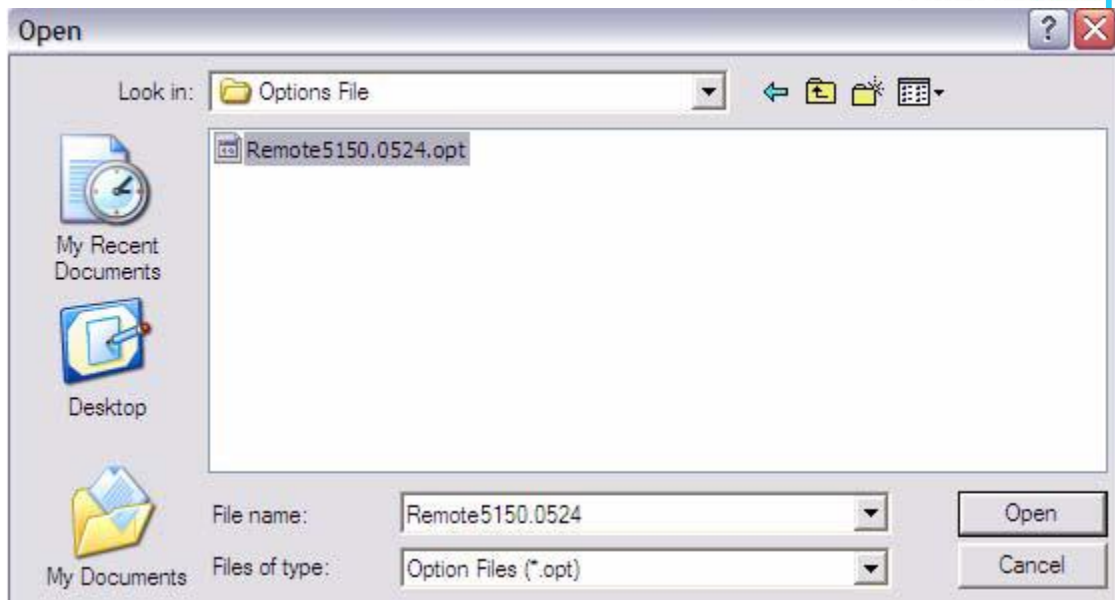
## 6 DOWNLOADING THE OPTIONS FILE TO THE SATELLITE ROUTER

Perform the steps in this section to download the remote options file to the Satellite Router.

1. In iSite, right-click the Satellite Router and select Download Option from Disk.

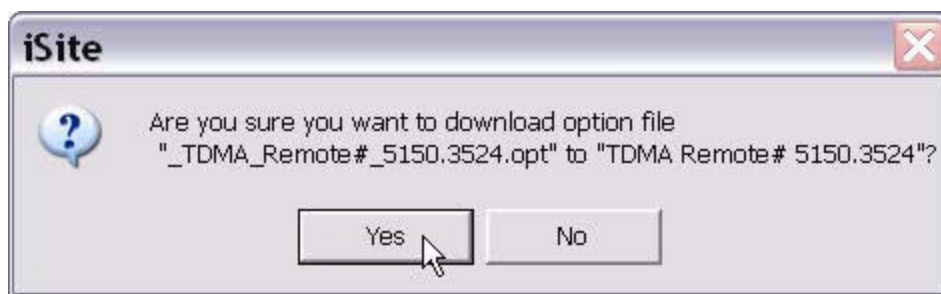


2. In the Open dialog box, navigate to the folder on your laptop containing the remote options file.



**Figure 11: Open Dialog Box with Remote Options File Selected**

3. Select the options file and click the **Open** button.
4. When iSite requests confirmation of the download request, click the **Yes** button.



**Figure 12: iSite Options File Download Confirmation Dialog Box**

- When iSite reports a successful download, click the Reset Now button to reset the Satellite Router.

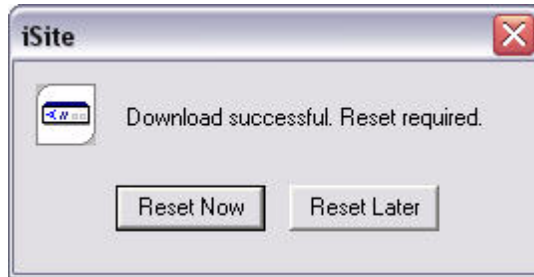


Figure 13: Resetting Satellite Router After Download



Figure 14: Resetting Satellite Router After Download(Telnet confirm)

**Note:** Resetting logs you out of the Satellite Router. After the reset, the IP address of the Satellite Router changes to the value provided by your Service Provider in the downloaded options file.

**Note:** If your Service Provider changed your Satellite Router password from the default iDirect password, log on to the router using the new password.