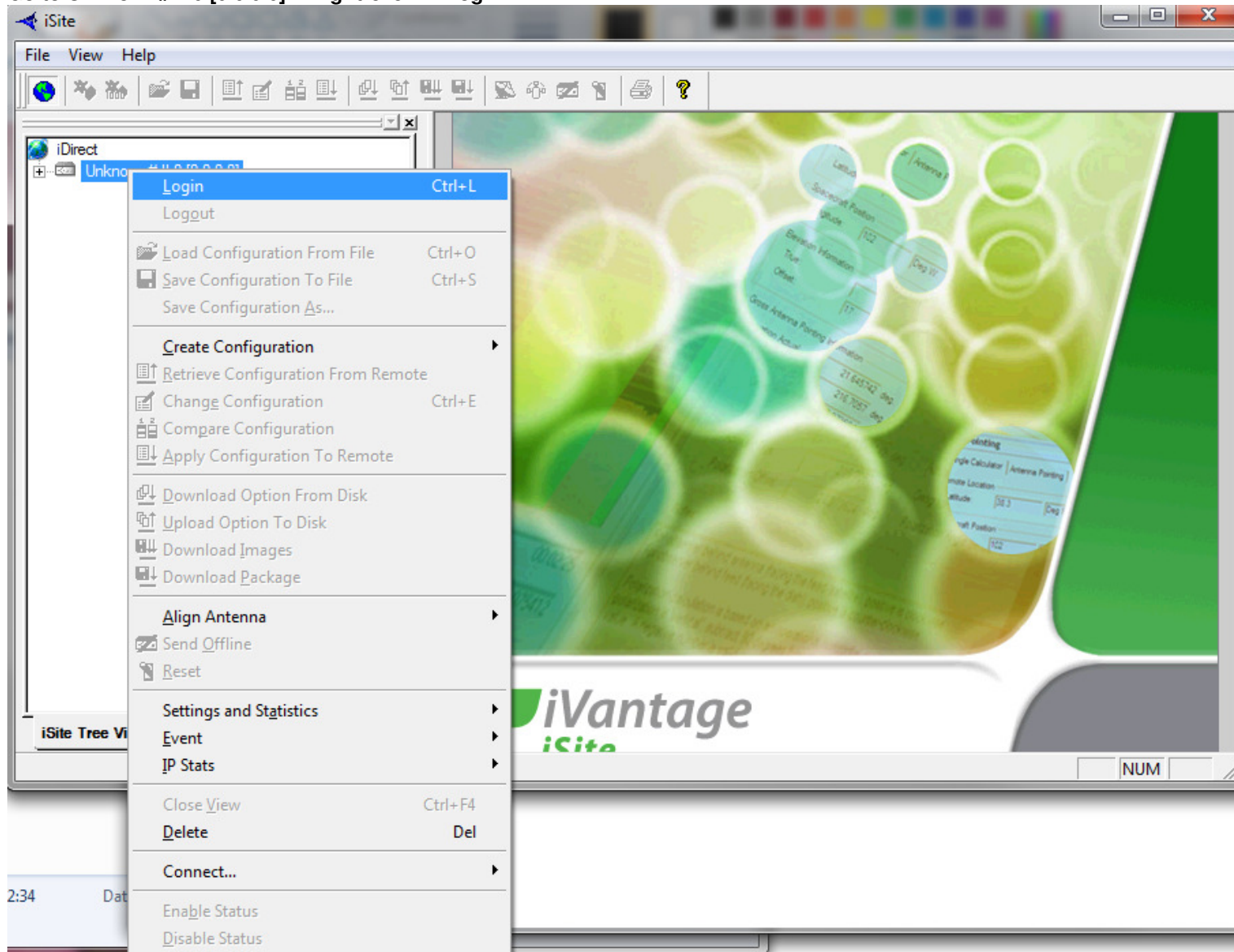





3. Go to Unknown# II.0 [0.0.0.0] → right-click → Login



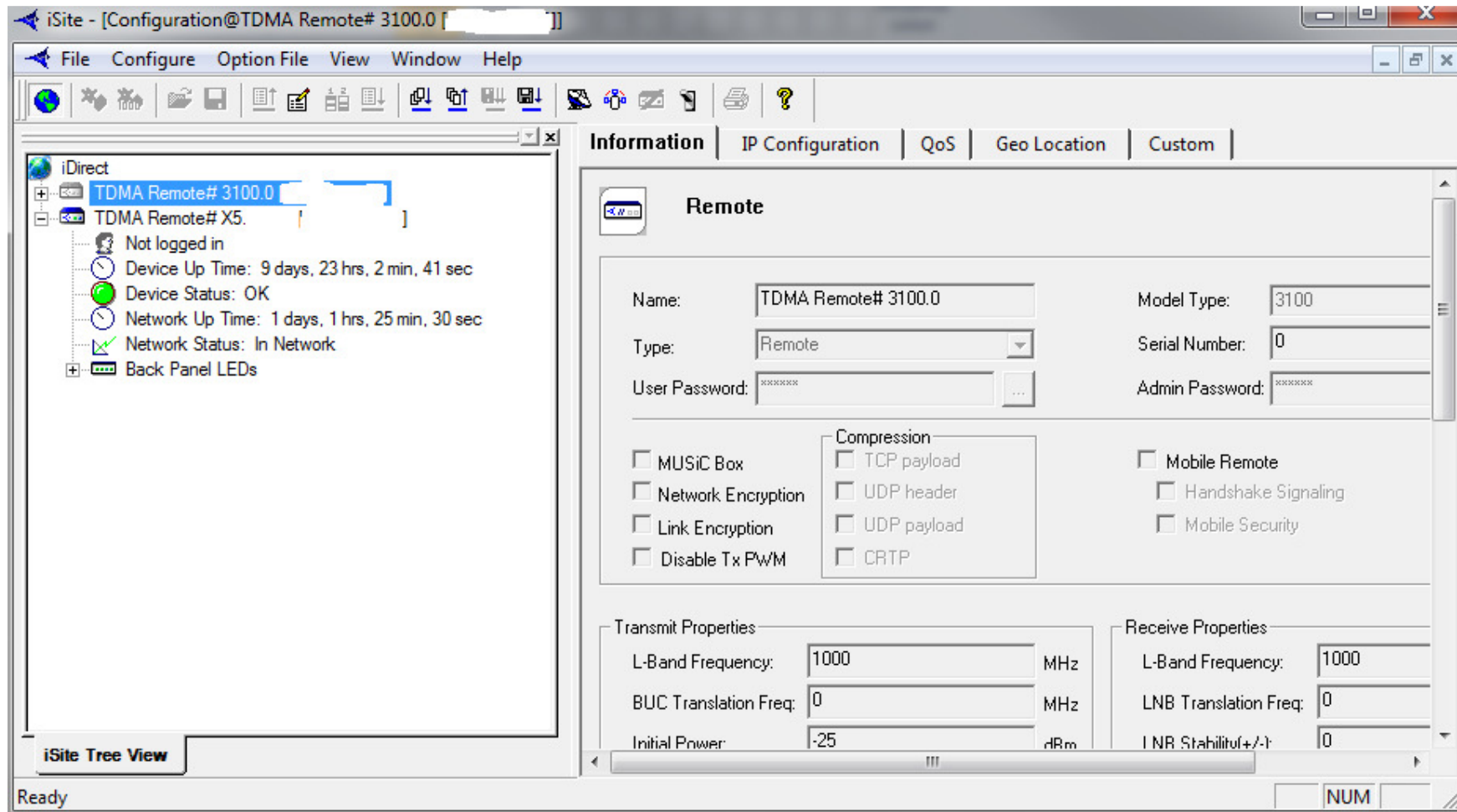
4. On the Login box enter as IP Address 46.29.109.113 and as Password 'M!!@n0T3l3p0rt', Login as 'Admin' and leave the Secure Connection flagged.



The image shows a standard Windows-style dialog box titled "Login". It contains the following elements:

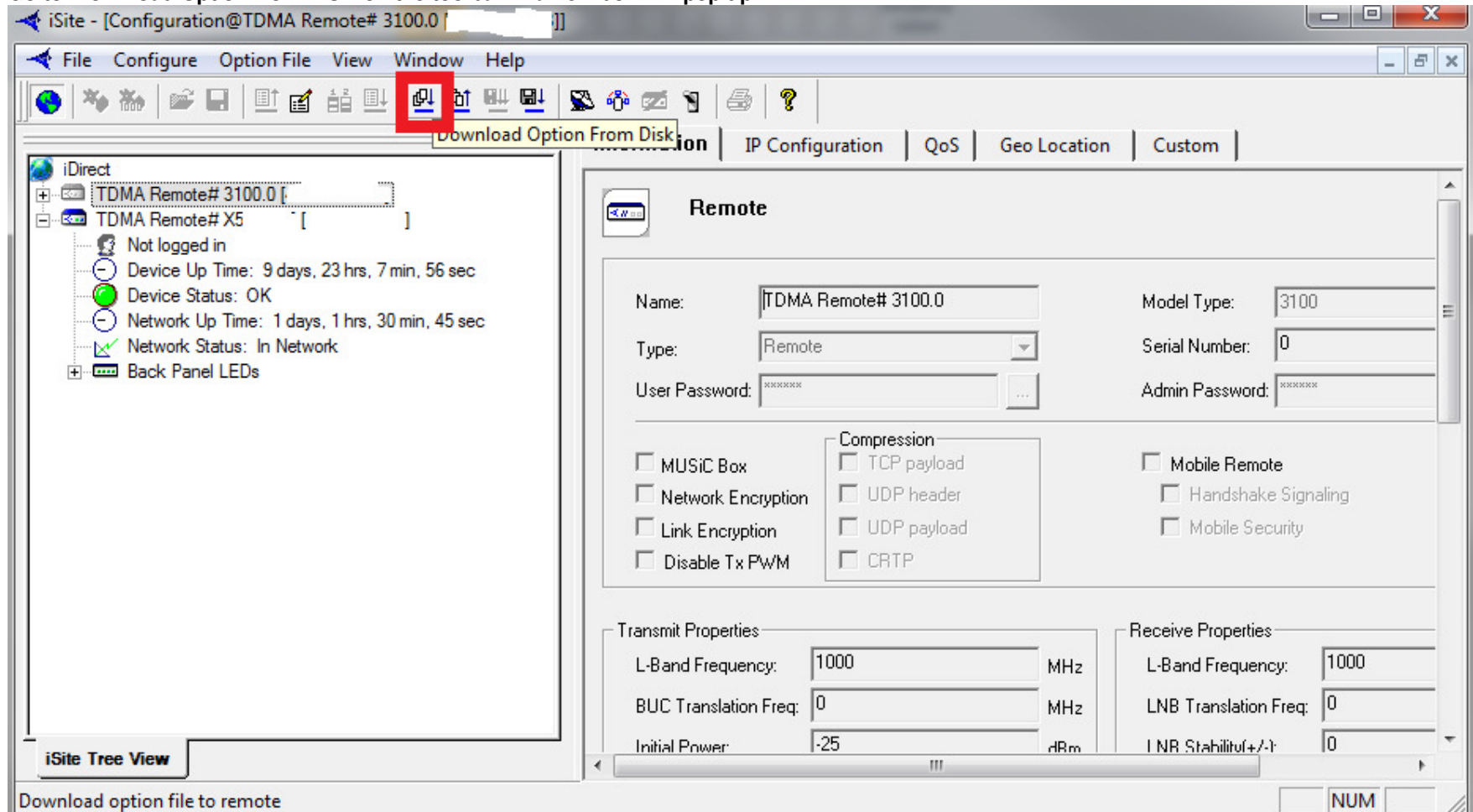
- An "IP Address:" label followed by a text input field containing "46 . 29 . 109 . 113".
- A "Password:" label followed by a text input field containing ten asterisks "\*\*\*\*\*".
- A "Login as:" label above a group box containing two radio buttons: "User" (unselected) and "Admin" (selected).
- A checked checkbox labeled "Secure Connection".
- At the bottom, two buttons: "OK" and "Cancel".

5. Press 'OK'.



Please do not consider the label 3100 after logging in. It's not an error.

6. Go to 'Download Option from Disk' on the toolbar → a new box will pop up.



7. Search the opt file in the directory path and open it.

8. You'll see a new small box asking if you are sure to load the opt file. ***Double check if the serial number is the same***; if NOT stop the procedure, if YES go ahead and press 'OK'.